

## 1.11 Inside a computer

### A. Processors and memory

chips	dual core	megabytes	megahertz
motherboard	processor	speed	upgraded

The "brain" of a computer is the <sup>1</sup>\_\_\_\_\_. Most of these are made by Intel and AMD, and are sometimes referred to as "<sup>2</sup>\_\_\_\_\_". The fastest processors are <sup>3</sup>\_\_\_\_\_, which means that there are two processors working together. The <sup>4</sup>\_\_\_\_\_ of a processor is measured in <sup>5</sup>\_\_\_\_\_, which is usually written as MHz.

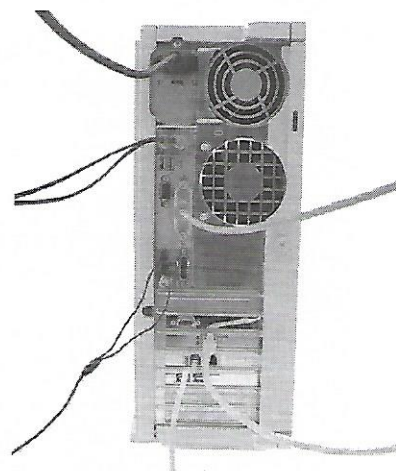
A computer's memory is measured in <sup>6</sup>\_\_\_\_\_. If a computer has 1,024 megabytes of memory, and the memory type is SDRAM, this is written as 1,024 MB SDRAM, and is pronounced "a thousand and twenty-four megabytes ess-dee-dram".

The processor and memory modules are located on the <sup>7</sup>\_\_\_\_\_. Changing a computer's processor is not generally practical, but the memory can usually be <sup>8</sup>\_\_\_\_\_.

### B. Power

disconnect	fan	mains electricity
overheating	shock	spikes
supply	surge protector	transformer

1. Laptops are powered by batteries or \_\_\_\_\_.
2. Mains electricity is converted to lower voltage by a \_\_\_\_\_.
3. A \_\_\_\_\_ protects electronic equipment from damage caused by power \_\_\_\_\_.
4. If you remove the cover from a computer, make sure you \_\_\_\_\_ the electricity \_\_\_\_\_. Otherwise, you may get an electric \_\_\_\_\_.
5. The computer is cooled by a \_\_\_\_\_. This prevents the processor from \_\_\_\_\_.



## 1.12 Data storage

burn

capacity

card

drawer

eject

free space

hard drive

stick

1. The data and applications on your computer are stored on the \_\_\_\_\_.
2. To run this application you need at least 50MB of \_\_\_\_\_ on your hard drive.
3. My computer's hard drive has a \_\_\_\_\_ of 120GB.
4. Do you like this CD? I can \_\_\_\_\_ you a copy if you want.
5. The opposite of "Insert the DVD" is "\_\_\_\_\_ the DVD".
6. I can't eject the CD. I think the \_\_\_\_\_'s stuck.
7. Digital cameras usually store pictures on a memory \_\_\_\_\_ or a memory \_\_\_\_\_.



**Which do you think is the best solution for each problem? (More than one solution is possible for some of problems.)**

1. I want to make a copy of a music CD.

2. I want to store some files. I may need to update them in the future.

3. I want to back up data from my computer. I want to update it every day.

4. My computer's having problems with reading and writing CDs.

5. I want to add 100MB of extra storage to my computer.

6. I want to send a copy of a small file to a friend. He has an old computer.

7. My computer's running slowly.

a. You need an external hard drive.

b. Use a CD-R.

c. Try a USB flash drive.

d. Perhaps you need a new internal CD drive.

e. Put them on a CD-RW.

f. Perhaps you need to defragment the hard drive.

g. You could put it on a floppy disk.



1. Scanners, printers and webcams are \_\_\_\_\_.  
 a. extras                                      b. peripherals                                      c. externals
2. Add extra USB \_\_\_\_\_ to your computer....  
 a. ports    b. doors    c. windows
3. ... with a USB \_\_\_\_\_.  
 a. centre    b. point    c. hub
4. ADSL is also known as \_\_\_\_\_.  
 a. wideband    b. broadband    c. longband
5. I want to get a \_\_\_\_\_ ADSL modem.  
 a. quick-speed    b. fast-speed    c. high-speed
6. The internet is much faster with a broadband connection than with \_\_\_\_\_.  
 a. dial-up    b. phone-up    c. call-up
7. With a wireless router, you can \_\_\_\_\_ your broadband connection with other users.  
 a. divide    b. combine    c. share
8. This wire's too short. I need an \_\_\_\_\_ cable.  
 a. extended    b. extension    c. extender
9. You can connect a USB plug to a PS/2 port by using \_\_\_\_\_.  
 a. an adaptor    b. a bridge    c. a connector

### Bluetooth®

**data  
signals**

**developed  
wireless**

**devices  
telecommunications**

**enabled**

Bluetooth® technology enables <sup>1</sup>\_\_\_\_\_ communication between <sup>2</sup>\_\_\_\_\_ such as laptop computers, mobile phones and PDAs. Bluetooth® <sup>3</sup>\_\_\_\_\_ devices use short-range radio <sup>4</sup>\_\_\_\_\_ to exchange <sup>5</sup>\_\_\_\_\_ quickly and easily. The technology was <sup>6</sup>\_\_\_\_\_ by a group of computer and <sup>7</sup>\_\_\_\_\_ companies including IBM, Intel, Nokia and Ericsson.